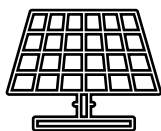
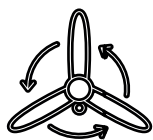


Cable management solutions for photovoltaic plants



Floating solar

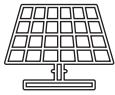


Utility scale



Commercial solar

3E Basor
CABLE TRAY SPECIALIST



Cable management solutions
for photovoltaic plants

Solar
CABLE TRAY

SUMMARY



1. UTILITY SOLUTIONS

Pile2Pile, Track2Track
& Track2Pile

2. COMMERCIAL SOLUTIONS

Rooftops with Basorfil
& Basorplast



3. FLOATING SOLUTIONS

Extreme humid
environments

4. BATTERY & INVERTER ROOMS SOLUTIONS

Insulating systems
with Basorplast



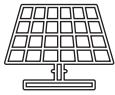
5. GLOBAL PV WORKS

Basor worldwide
photovoltaic experience

1.

UTILITY SCALE SOLUTIONS

PILE 2 PILE
TRACK 2 TRACK
TRACK 2 PILE



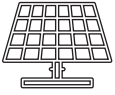
1. UTILITY SOLUTIONS: Trenching problems

High costs (open, insert tubes, close, signalling etc...)

Problems:

- If rains when the trench is open, the water inside softens the ground, increases the humidity and must be removed
- The labour passing cables is hard and slow
- Normally the installers don't put all the cables at the same time, they must open the trench a couple of times.
- Sometimes, when they open, cables can be broken.
- If the cables are broken, it must be welded, losing power or data capabilities.
- All these problems, make larger the delivery time of the work
- The movements or the humidity of the terrain, can damage the cables
- When the work is delivered, there are difficulty in the maintenance of the site
- Difficulty for ventilation of the cables (larger cable section)
- Possibility to be affected by rodents
- The trenching can affect to the stability of the post of the followers
- Non terrain compacted





1.

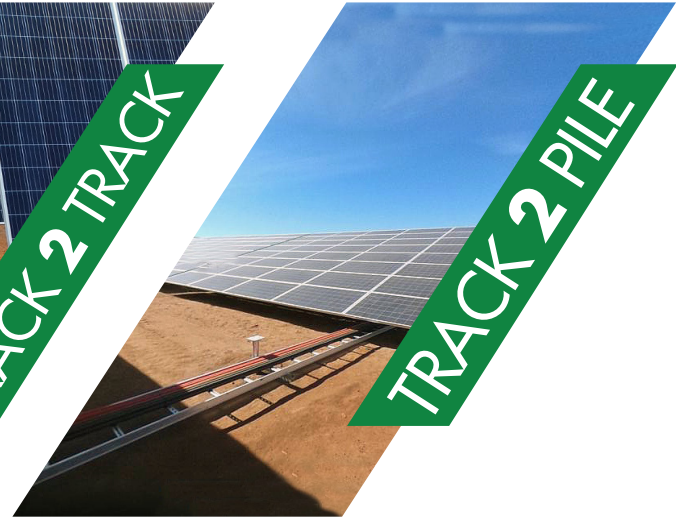
UTILITY SOLUTIONS: Pile2Pile, Track2Track y Track2Pile



PILE 2 PILE



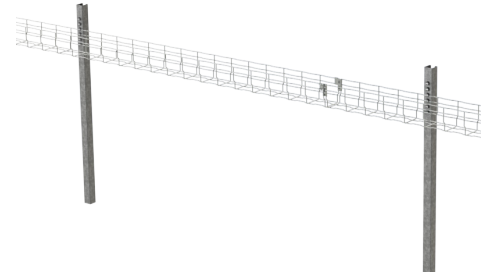
TRACK 2 TRACK



TRACK 2 PILE

PILE 2 PILE

- Quick assembly system
- The cable is dropped on the tray without any obstacle
- Possibility of separating data and power cables
- Possibility to install cover for UV protection of cables
- Different cable tray section 2x2, 2x4, 2x6, 4x4, 4x6, 4x8
- Cables are completely flat
- 8-10Ft Span for the Tray



TRACK 2 TRACK

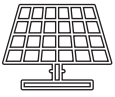
- Installation of the tray in 20FT sections, quick assembly
- The bracket only transmits mechanical effort to the Z-way pole, i.e. downwards
- Cable support every 12 inches, 9 inches if necessary
- The cable is dropped on the tray without any obstacle
- No holes in the pole are required
- Possibility of separating data and power
- Possibility to install cover for UV protection of cables
- 10-25 Ft Span between trackers



TRACK 2 PILE

- Quick assembly system
- The cable is dropped on the tray without any obstacle
- No holes in the pole are required
- Possibility of separating data and power
- Possibility to install cover for UV protection of cables
- 25-50 Ft Between trackers





Cable management solutions
for photovoltaic plants

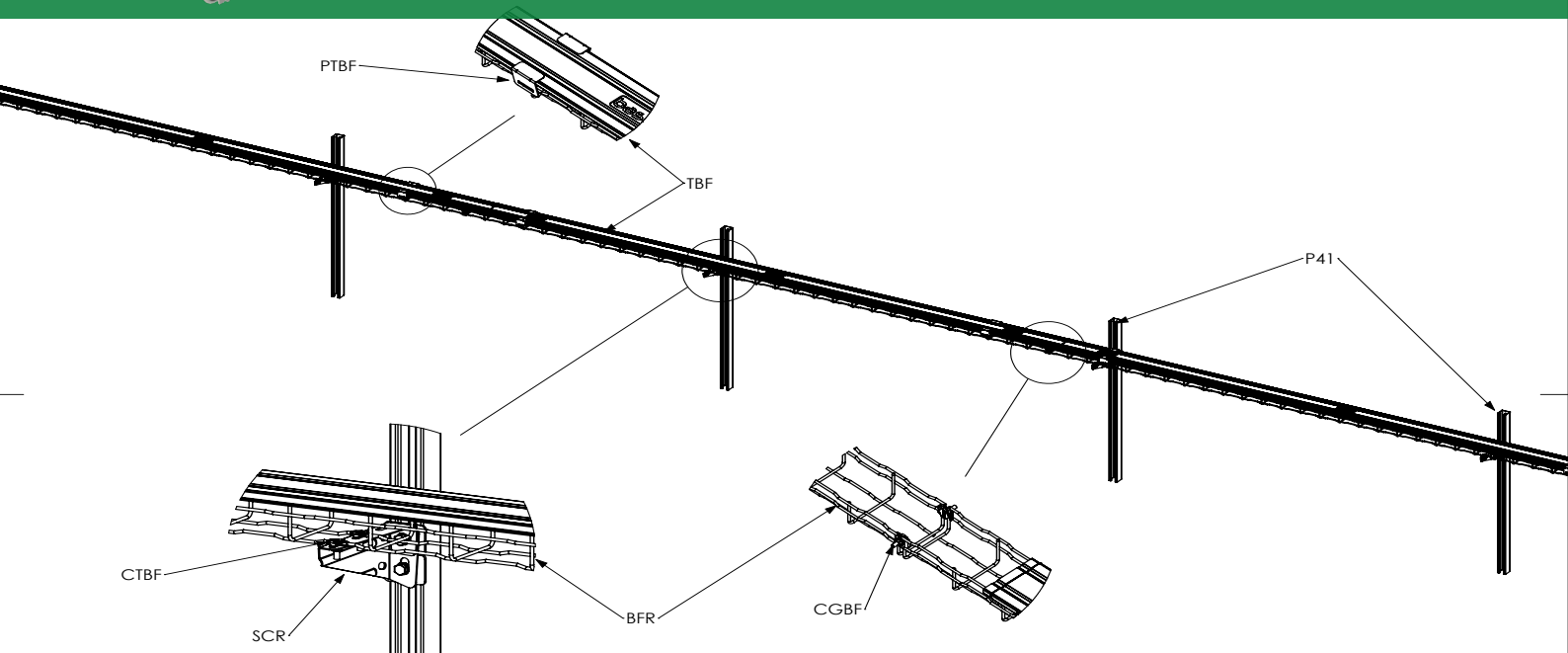
Solar
CABLE TRAY

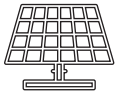
Pile2Pile



Basorfil BF2R-BFR

- Quick assembly system
- The cable is dropped on the tray without any obstacle
- Possibility of separating data and power cables
- Possibility to install cover for UV protection of cables
- Different cable tray section 2x2, 2x4, 2x6, 4x4, 4x6, 4x8
- Cables are completely flat
- 8-10ft Span for the Tray

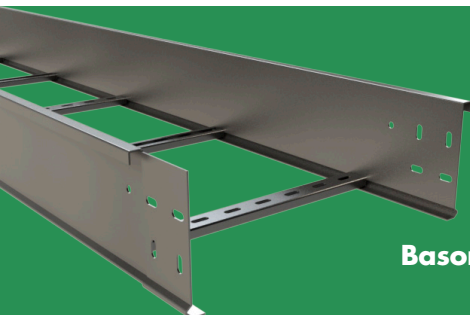




Cable management solutions
for photovoltaic plants

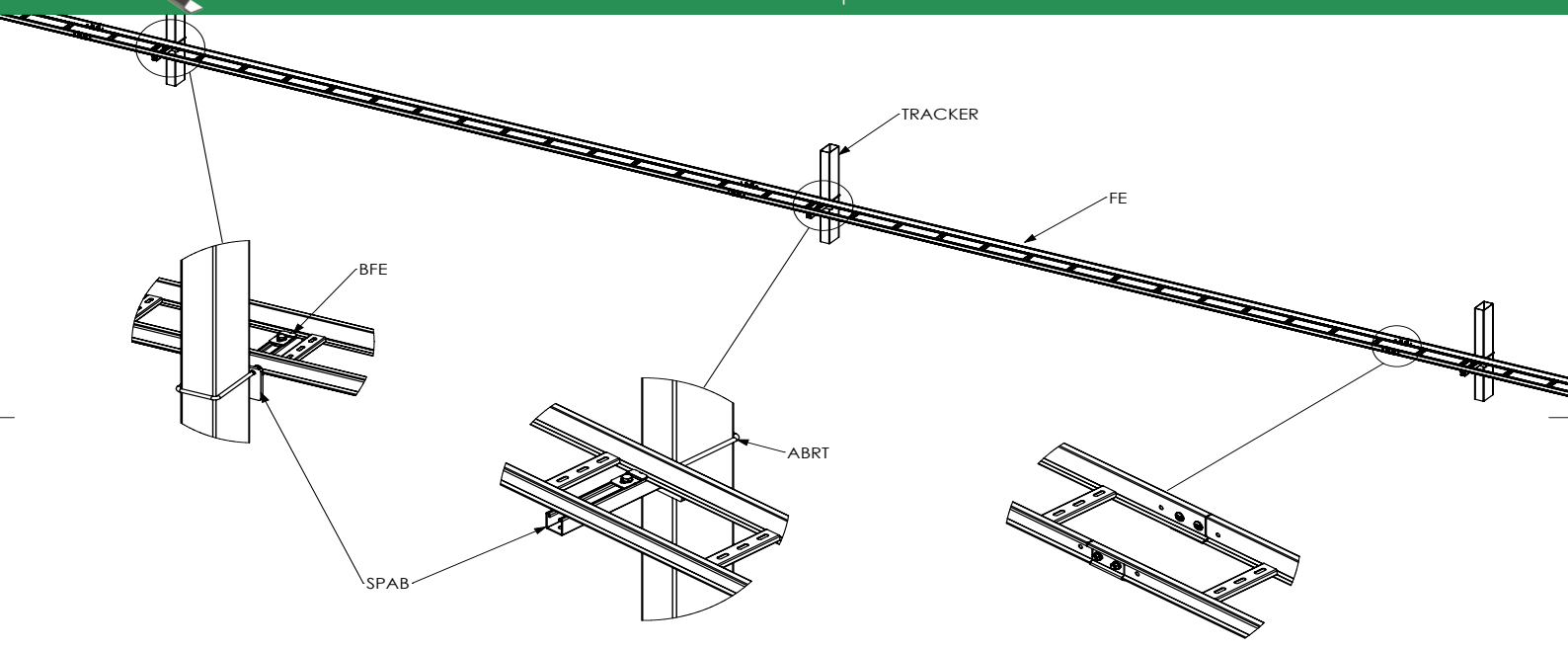
Solar
CABLE TRAY

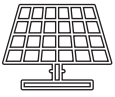
Track2Track



Basortrav FE

- Installation of the tray in 20FT sections, quick assembly
- The bracket only transmits mechanical effort to the Z-way pole, i.e. downwards
- Cable support every 12 inches, 9 inches if necessary
- The cable is dropped on the tray without any obstacle
- No holes in the pole are required
- Possibility of separating data and power
- Possibility to install cover for UV protection of cables
- 10-25 Ft Span between trackers





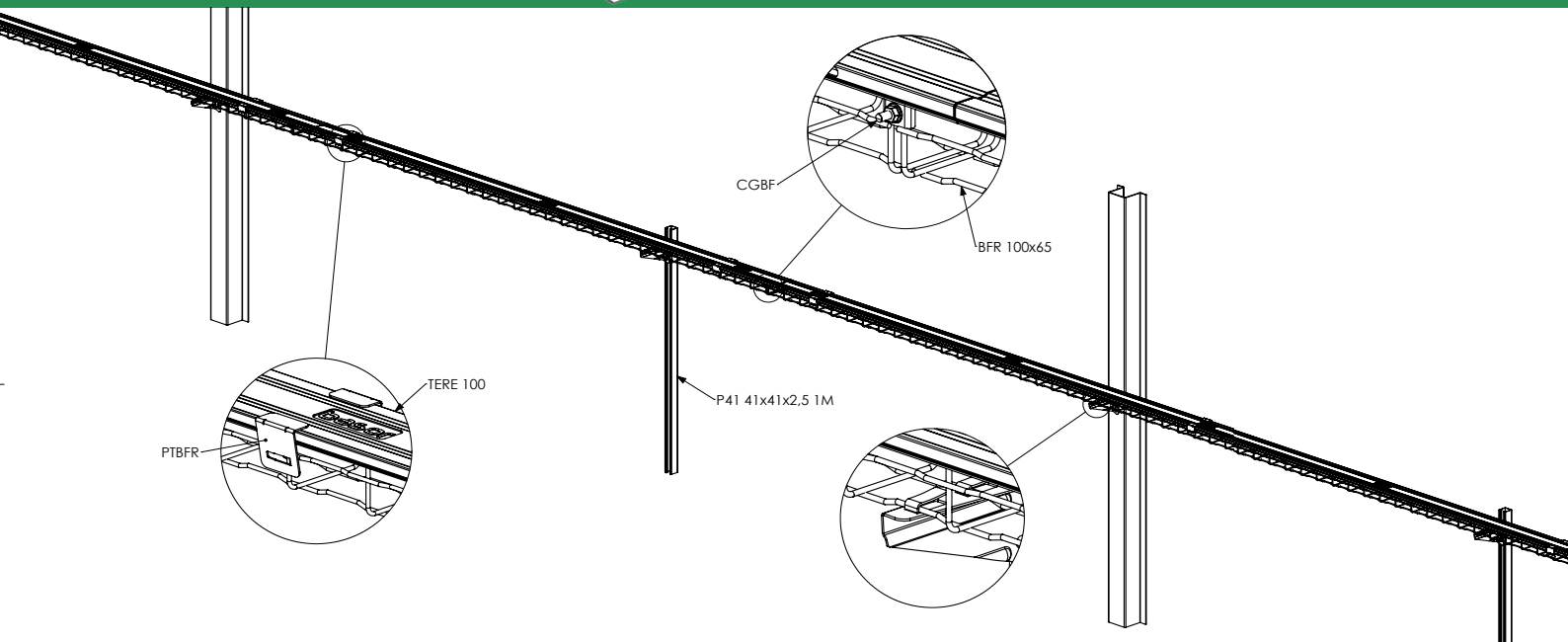
Cable management solutions
for photovoltaic plants

Solar
CABLE TRAY

Track2Pile



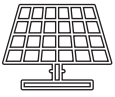
- Quick assembly system
- The cable is dropped on the tray without any obstacle
- No holes in the pole are required
- Possibility of separating data and power
- Possibility to install cover for UV protection of cables
- 25-50 Ft Between trackers



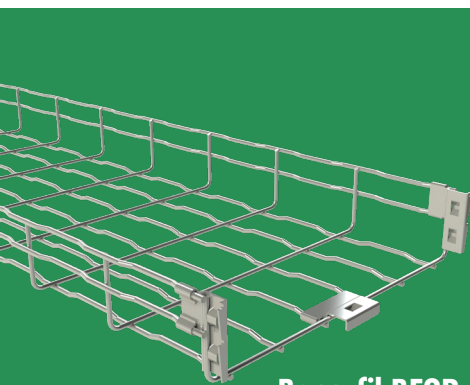
2.

COMMERCIAL SOLUTIONS





2. COMMERCIAL SOLUTIONS: Rooftops



Basorfil BF2R-BFR

The Basorfil BF2R Self Splicing System splices tray in as little as 4 seconds.

Quick assembly system

- The cable is dropped on the tray without any obstacle
- Possibility of separating data and power cables
- Possibility to install cover for UV protection of cables
- Different cable tray section 2x2, 2x4, 2x6, 4x4, 4x6, 4x8
- Cables are completely flat



Basorplast BPE

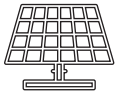
Basorplast BPE Solid Bottom PVC Raceways are Designed to Protect:

- Designed to protect the users and installers against electrical shock in case of some damaged cable.
- Designed to protect people and property against the ignition and propagation of the fire.
- Designed to protect your investment from corroding away over the life of the installation.
- Designed to protect the cables being supported from the negative impact of a harsh environment.

3.

SOLAR FLOATING SOLUTIONS





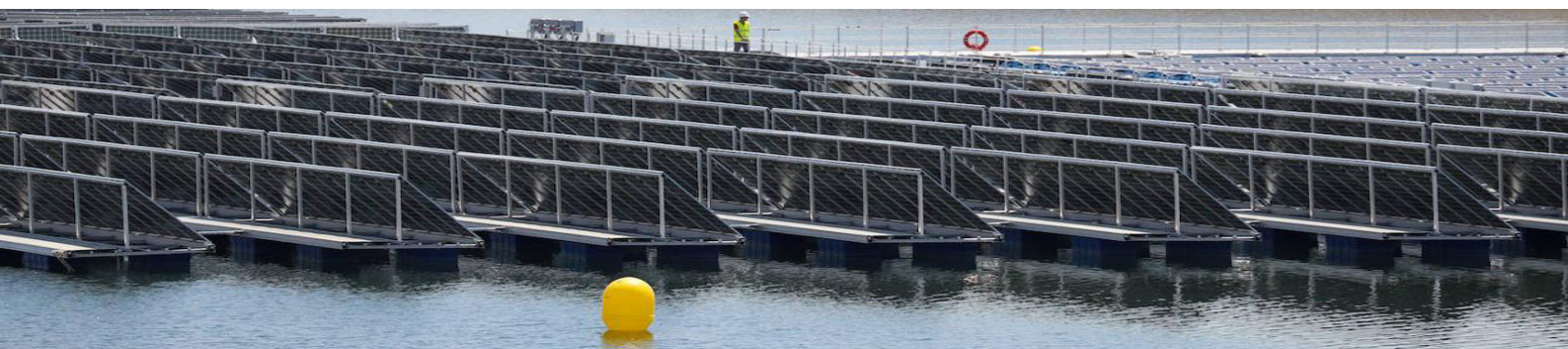
3. **FLOATING SOLUTIONS:** Extreme humid environments



Basorplast BPE Solid Bottom PVC Raceways are Designed to Protect:

- Designed to protect the users and installers against electrical shock in case of some damaged cable.
- Designed to protect people and property against the ignition and propagation of the fire.
- Designed to protect your investment from corroding away over the life of the installation.

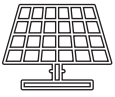
Basorplast BPE



4.

BATTERY & INVERTER ROOM SOLUTIONS





4. BATTERY ROOM SOLUTIONS: Insulating systems with Basorplast



Basorplast BPE Solid Bottom PVC Raceways are Designed to Protect:

- Designed to protect the users and installers against electrical shock in case of some damaged cable.
- Designed to protect people and property against the ignition and propagation of the fire.
- Designed to protect your investment from corroding away over the life of the installation.

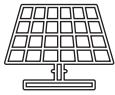
Basorplast BPE



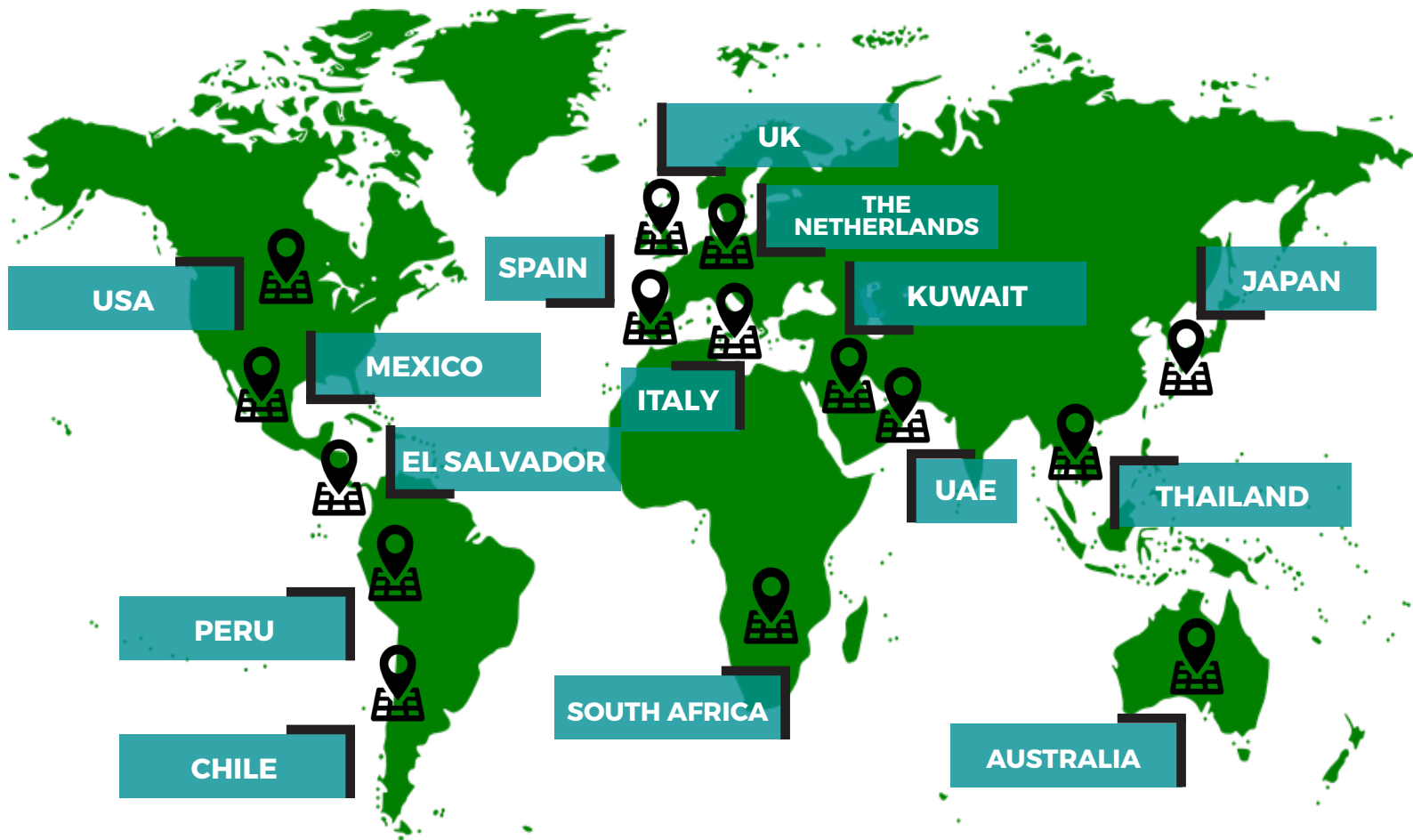
5.

GLOBAL PV WORKS





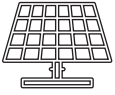
5. GLOBAL PV WORKS: Basor worldwide photovoltaic experience



+ 100 projects from
2MW to 500MW

Our partners





Notes



Basor Electric S.A

604 Mulberry Street Milstadt

Illinois 62260 - USA

Telephone: 618 476 6300

Fax: 618 476 6301

Toll Free: 844 393 3985

customer.service@basor.com

